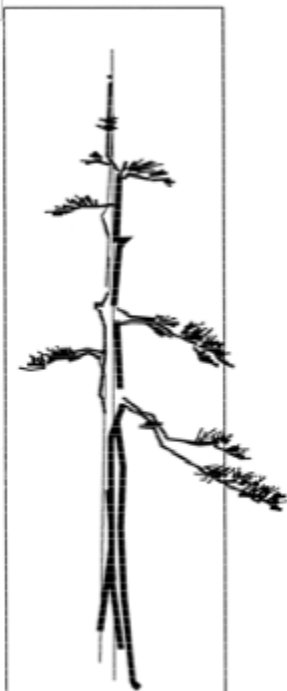


BONSAI NEWS

October 2019



*Milwaukee
Bonsai Society
PO Box 240822
Milwaukee Wi
53224*

*Information Line
414-299-9229*

October Meeting

Bring your first tree or longest-owned tree to the next meeting and share your story.

I've only been in the club since 2014. For me, it's getting to be a little difficult to remember which tree is which as far as length of owning. I try to keep some records but you know how that goes.

I could go down the list of trees that have "taught me lessons" in bonsai.

That's the nicest way I can think of to describe a dead tree. I will only say that I have learned about soils, over-watering, under-watering, when to prune and when not to, bugs, rodents, and winter care. I have learned many lessons and hopefully won't repeat them.

Bring a tree and enjoy the stories, lessons and camaraderie.

Bryan Lorentzen

October

- Oct 1 — **MBS meeting**
Member's 1st trees
Oct 20—Intro to Bonsai
workshop

November

- Nov 5 — **MBS meeting**
Seasonal tree care
Nov 22-24 — Folk Fair

December

No meeting

January

No Meeting

February

- Feb 15—Novice Class #1*
Feb 22 — **MBS meeting**
TBD
Feb 29—Novice Class #2*

March

- March 14 —Novice Class #3*
March 3 — **MBS meeting**
TBD

*Open to MBS members only

Next Meeting
Oct 1, 2019
6:45 pm

**Boerner Botanical
Gardens**

President's Message October 2019

October already? This year is just flying by. Before you know it 2020 will be here and a new President will be writing these newsletter messages instead of me. There is still time to volunteer for a spot on the executive committee. The election will be held at the beginning of the October meeting.. Even if you decide not to run for a spot on the board make sure you attend the meeting so your vote will count in this election.

This is an extremely busy time for MBS. This weekend is the 49th Annual Exhibit; starting with a reception for members and guests on Friday and continuing throughout the weekend with the exhibit for the general public. Tyler Sherrod will be our guest artist and I am looking forward to meeting him as well as watching his demo on Saturday afternoon. As my husband told me this is "Bonsai-fest" weekend.

Another exciting topic that I am looking forward to is our October general meeting. The topic for October is our member's first tree or longest owned tree. In other words, everyone should bring in either their first tree (if you are lucky enough to still have it) or bring in the tree you have owned the longest in your collection. When you bring in your tree to the meeting come prepared to tell everyone a little bit about the tree (when you got it, how you got it, etc). I still have my first tree and I have an interesting story about the tree that some people have heard before, but everyone will hear at the meeting. If I told everyone the story now I wouldn't have anything to talk about at the meeting when I bring my tree in, so you will need to wait until October to learn more about my first tree.

This meeting should be a fun evening where we can all learn from one another. We can learn what went well and enabled everyone's first trees or longest owned trees to thrive. I can envision a meeting filled with laughs and fun. Make sure you join us October 1st

Enjoy the cooler weather,

Melissa J

Slate of 2020 Executive Committee

President—Bryan L	1st VP— Randy W
2nd VP—Erich B	Director—Phil R
Secretary— Michael K	Director—Rick W
Treasurer— Cliff O	Director—Dave M

DON'T FORGET THAT THE 49TH ANNUAL EXHIBIT IS BEING HELD THIS WEEK-END AT BOERNER BOTANICAL GARDENS. BELOW IS THE SCHEDULE OF EVENTS.

DON'T FORGET THAT YOU WILL NEED YOUR PINK PARKING PERMIT FOR THE FRIDAY NIGHT RECEPTION SINCE CHINA LIGHTS IS ALSO GOING ON THAT DAY.

SCHEDULE for 49th Annual MBS Exhibit @ Boehner Botanical Gardens	
Thursday, September 26, 2019	
11:00 am - 4:00 pm	Exhibit hall set-up
4:00 - 7:00 pm	Tree drop off
Friday, September 27, 2019	
12:30 - 5:00 pm	Judging by Tyler Sherrod
1:00 - 5:00 pm	Vendor set-up
6:00 - 9:00 pm	Reception and critique with Tyler Sherrod
Saturday, September 28, 2019	
9:00 am - 12:30 pm	Material provided conifer trees workshop with Tyler Sherrod
10:00 am - 5:00 pm	Exhibit and vendor area open to everyone
12:30 PM	Raffle
1:00 - 5:00 pm	Demonstration with Tyler Sherrod open to everyone
5:00 PM	Raffle
5:30 - 8:30 pm	Banquet and auction with raffle
Sunday, September 29, 2019	
9:00 am - 12:30 pm	Material provided maple tree workshop with Tyler Sherrod
10:00 am - 3:00 pm	Exhibit and vendor areas open to everyone
12:30 PM	Raffle
1:00 - 4:30 pm	Bring your own tree workshop with Tyler Sherrod
3:00 - 5:00 pm	Tree pick-up and exhibit hall tear down



Sign up Now for the 2020 Novice Class

The registration window has opened for the 2020 Novice Class, There will be ONLY 12 openings for this class so if you are interested do not delay, as it will fill up quickly

What does this class provide?

The Novice Class curriculum is focused on helping you develop and prepare a solid foundation of basic bonsai skills and knowledge.

Sessions 1 thru 3 are mainly lecture based with demonstrations to help you better understand the ins and outs of bonsai cultivation.

We will have discussions about watering; soil compositions; fertilization; pest management; repotting; design; pruning; wiring; seasonal timing of work, and much more.

This class provides a work book for future reference and you will also leave with a new tree for your collection.

In the 4th session you will be working on the tree provided, styling and reporting

The 5th session you will bring your tree back, we will review its current state and provide suggestions as to what you should be doing in the future with this tree.

We will also visit a local nursery and discuss how to evaluate “potential bonsai” from typically available nursery stock.

The class dates are :

Saturday	February 15 th	9:00 AM till 1:00 PM	Boerner Botanic Gardens
Saturday	February 29 th	9:00 AM till 1:00 PM	Boerner Botanical Gardens
Saturday	March 14 th	9:00 AM till 1:00 PM	Boerner Botanical Gardens
Saturday	April 4 th	9:00 AM till 3:00 PM	Boerner Botanical Gardens
Saturday	May 2 nd	9:30 AM till 2:00 PM	Oconomowoc

The cost for this class is \$170 . You can click on the [Eventbrite](#) link or the link on the MBS website to register.

Your instructor is Ron Fortmann, who has been practicing bonsai for 25 years and has taught the Novice classes for several years now.



Bask in the Beauty of Bonsai, Drawing from Bonsai, Yoga Amongst the Bonsai and Much More

09/07/19



*This Common Juniper (*Juniperus communis* var *depressa*) makes its home at the U.S. National Bonsai & Penjing Museum's North American pavilion. It was donated to the Museum by **Jack Douthitt**.*

Membership Bonsai Bucks

by PAM W

Last month I wrote an article about the Membership Resource page on the website. Well I made a mistake in reporting our volunteer hours.

MBS members enriched our communities with 480 hours of service in 2017 and 524 hours in 2018. And that are only the documented hours.

In tallying our bonsai bucks for 2019 it occurred to me these are not hours these number are four-hour shifts that each of us donate to our community. So, let's make the correction and revisit the numbers:



- 2017 – 480 shifts - 1920 hours
- 2018 – 524 shifts - 2096 hours
- 2019 – 516 shifts - 2064 hours

Why do we track these shifts? So we can tally them for Bonsai Bucks.

What are Bonsai Bucks? When you volunteer at an MBS (Annual Exhibit, workshops, State Fair, etc), you will receive a Bonsai Buck for each shift.

How does this help me? We convert these Bonsai Bucks to raffle tickets to be used at the Annual Exhibit.

Check out your current count on [Bonsai Bucks](#) and collect them at this weekend's Annual Exhibit



WISCO BONSAI
www.WiscoBonsai.blogspot.com
www.WiscoBonsai@gmail.com

WISCO BONSAI

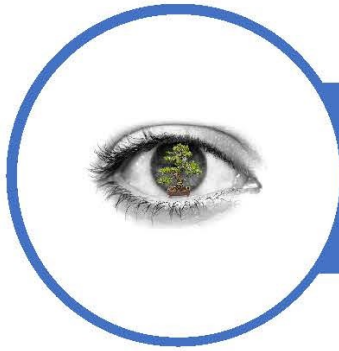
DELIVERY TO MBS MEETINGS AVAILABLE.
(ALSO TO THE GENERAL METRO AREA WITH MINIMUM PURCHASE OR SMALL FEE)

PROVIDING SUPERIOR BONSAI PRODUCTS SUCH AS U.S. SOURCED SUBSTRATES, U.S. MADE CUT-PASTE AND CUSTOM BLENDED FERTILIZERS.

SEE ALL THE PRODUCTS: www.WiscoBonsai.com

ALSO TAKING ORDERS FOR LARGE QUANTITIES OF SUBSTRATE

contact: WiscoBonsai@gmail.com



MABA/MILWAUKEE 2020

WE COME TOGETHER TO MAKE OUR COMMUNITIES STRONGER
THROUGH BONSAI

MABA/MBS

The Mid-America Bonsai Alliance (MABA) is an organization made up of local bonsai clubs including The Milwaukee Bonsai Society (MBS) to create a rich and diverse community through its inspiring bonsai activities.

INTRODUCTION

On June 25-28, 2020, Bonsai artists and MABA members are heading to Milwaukee, WI for the MABA/Milwaukee Convention! In part to see headlining artist François Jeker from France, Ted Matson from California and any of the other eight artists. [Read more.](#)

BEGINNER FRIENDLY

Beginner friendly headlining artist Ted Matson from Southern California will help you get started. [Read More.](#)

WORKSHOPS

One of the most enticing events of any bonsai convention should be the workshop and material opportunities. The guest artists have worked hard to provide quality material by selecting the trees for you to select and gain valuable insight from them.

“EXPERIENCE WITH” WORKSHOPS

Special emphasis is being paid to how you choose, prepare and work with collected, pre-bonsai and nursery material. Attend one or all three of these special “*Experience With*” sessions as a workshop participant or observer. As a workshop attendee you will get the material and hands on experience/guidance with your material. As a silent observer, you can observe this guidance.

MATERIAL PROVIDED WORKSHOPS

Enjoy some of the unique material our artists were able to provide. Starting with Silverberry a tree with silvery white leaves, or Ted Matson’s shohin pine material that he has been developing, or Todd Schlafer’s collected material from the Colorado Rockies, and who can pass up working on material presented to the New Artist Competition. How about making your own accent or shohin pot?

BRING YOUR OWN MATERIAL WORKSHOPS

Suitable for all levels Bring Your Own Material or purchase something at the vendor area. It’s a great way to both start a bonsai by setting the structure or get guidance as you enter refinement stage.



PO Box 240822
Milwaukee, WI 53224
Www.milwaukeebonsai.org
RETURN SERVICE REQUESTED

Next MBS meeting will be
Oct 1, 2019 at 6:45pm
Boerner Botanical Gardens
9400 Boerner Dr
Hales Corners, WI 53130

2019 MBS OFFICERS

President	Melissa J
First VP	Bryan L
Second VP	Erich B
Secretary	Leo S
Treasurer	Wally V
Director	Rob P
Director	Rick W
Director	Phil R
Past Pres.	Judy S

Other Club Functions

Newsletter	Melissa J
Webmaster	Pam W

PAB Board—Ron F, Houston S & Judy S



Crisp and colorful
Floating on the breath of fall
Then landing gently