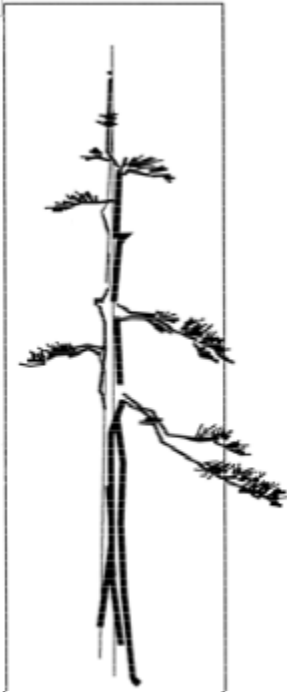


# BONSAI NEWS

July 2022



*Milwaukee  
Bonsai Society  
PO Box 240822  
Milwaukee WI  
53224*

## Upcoming meeting

The topic of this month's meeting is basic styling. We will be discussing the different styles of bonsai and setting the foundation for the future of the tree.

This will be a great opportunity to learn and ask questions. Styling is an important aspect of the bonsai journey and can be confusing at times.

There will also be time to answer questions anyone may have. Remember, the only dumb question is the one that went unasked.

### July

July 2 — Basic Styling

### August

August 4-14 — State Fair

August 6—Summer cutback

August 7 — Bonsai Skills Building\*

August 27-28 Annual Exhibit  
Lynden Sculpture Gardens

### September

Sept 3 — Wire a tree

### October

October 1 — Selecting  
Nursery Material

### November

November 5 — Fall work,  
cutback, shoot selection

### December

December 3 — Club meeting

\*Open to MBS Members Only

## Next Meeting

**July 2, 9am  
At Boerner  
Botanical  
Gardens**



## President's Message

Hello fellow bonsai enthusiasts.

Well, after two postponements it's finally here, the long awaited MABA convention being held at the Four Points hotel on Brown Deer road June 23-26. The exhibit and vendor area is free to all and is open Friday - Sunday. There are still opportunities to register for the entire event and one day registration that will provide access to all of the workshops, demonstrations and presentations from visiting artists and some of our experienced club members. There are still openings for some of the workshops so if you haven't already checked out what is available, please go to the MABA link on the MBS website before all of the spots are filled. There are also still many volunteer opportunities available and remember, this will count towards the 20 hours needed for the club volunteer dinner in October.

We will be having our club meeting on Sat July 2nd, same time and place. We will be discussing basic bonsai styling at the July meeting.

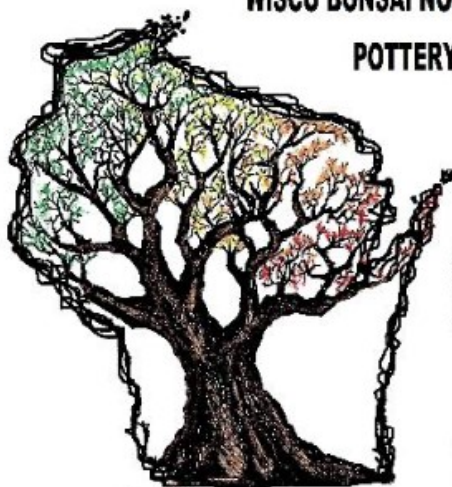
Please feel free to bring any trees you have questions about or would like help with.

State Fair and the Annual Exhibit are just around the corner in August. I encourage everyone to participate on these club events and show your trees. Be proud of the work you have put into your trees and show them off to the public. They don't have to be perfect and if you would like some assistance with getting your tree or trees ready, don't hesitate to reach out to other club members. We are all happy to help.

Looking forward to seeing all of you at some point during the MABA convention.

Erich, President

**WISCO BONSAI NOW HAS THE AREA'S LARGEST SELECTION OF ARTISIAN, HANDMADE BONSAI POTTERY, MUCH OF WHICH CONSISTS OF LOCAL AND REGIONAL ARTISTS.**



**WE ALSO NOW CARRY A LINE OF TOOLS GEARED TOWARD THE BEGINNER AND NOVICE AMONG US, ALONG WITH ALL MANNER OF BONSAI SUNDRIES, SUCH AS, COPPER & ALUMINUM WIRE, JIN SEAL, WOUND PUTTY, ETC.**

**AND OF COURSE THERES THE SUBSTRATE, WISCO GOLD... ASK FOR IT BY NAME !!! WE ALSO OCCAISIONALLY HAVE OTHER RAW SUBSTRATE COMONANTS AVAILABLE (PUMICE, LAVA, ETC).**

**GOT ORCHIDS ? WE HAVE A SUBSTRATE FOR THOSE TOO !!!**

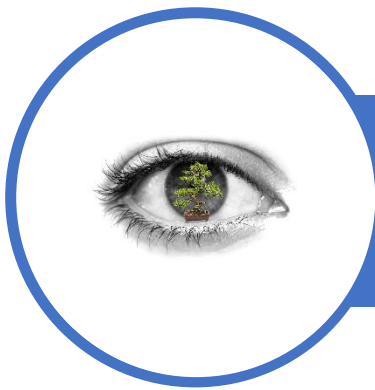
[WiscoBonsai@gmail.com](mailto:WiscoBonsai@gmail.com)

414-248-3827

[www.WiscoBonsai.com](http://www.WiscoBonsai.com)

**WISCO BONSAI**  
www.WiscoBonsai.com

**DUE TO COVID, SHOP CURRENTLY OPEN BY APPOINTMENT ONLY AND ALL SAFETY MEASURES ARE IN PLACE.**



# MABA/MILWAUKEE 20TWO

WE COME TOGETHER TO MAKE OUR COMMUNITIES STRONGER  
THROUGH BONSAI

## INTRODUCTION

On June 23-26, 2022, Bonsai artists and MABA members are heading to Milwaukee, WI for the MABA/Milwaukee Convention! In part to see headlining artist François Jeker from France, Ted Matson from California and any of the other eight artists. [Read more.](#)

## BEGINNER FRIENDLY

Beginner friendly headlining artist Ted Matson from Southern California will help you get started. [Read More.](#)

## WORKSHOPS

One of the most enticing events of any bonsai convention should be the workshop and material opportunities. The guest artists have worked hard to provide quality material by selecting the trees for you to select and gain valuable insight from them. [Read More.](#)

## 10 REASONS TO ATTEND MABA MILWAUKEE

**Learn from the Best:** François Jeker is a world class artist in design. His carving techniques are arguably the best in the world. Ted Matson is a stellar teacher. Todd Schlafer and Jennifer Price are two of the best new artists in North America. Mark Fields leadership skills are among the best along with his artistry. Watch them transform a piece of raw material.

**Regional:** Take the weekend to discuss techniques, care, trees with others from our region. Those of us who have distilled information from numerous artists and adjusted it for our region will be available to answer your questions and talk about our particular challenges.

**Value Priced:** MABA/Milwaukee 202Two has many sponsors to help offset the cost of bringing quality artists, material, and experience that is value priced. Included in registration are educational presentations, observing of all workshops and diverse demonstrations.

**New Trees:** Twelve workshops have material provided! The artist usually picks the material so that you get the best material along with their guidance. And the material is geared to our climate and can be developed by you into show quality bonsai

**Community:** Become involved and connect with a community of bonsai enthusiasts in your area. Get recognized for your skills, connect with friends and make new friends, network with experts in your area. Attend some great lectures in a small intimate environment.

**Workshops:** Workshops range from beginner friendly, intermediate to advanced; including a set of "experience with" workshops that highlight treatment for collected, nursery, and pre-bonsai material. There is a workshop for everyone.

**Quality Vendors:** Our careful selection of vendors allows you to purchase material, containers, and supplies without risk of inferior products. The vendors are partners in our convention. Win some great bonsai items from a raffle and or buy yourself something new.

**Bonsai Exhibits:** Exhibit your tree to receive written critiques by the headlining artists. See your tree among other quality bonsai in the innovative exhibit area. Experience not only the exhibit at the hotel but enjoy the Bonsai Exhibit and viewing stone display at LSG.

**Local Attractions:** Take advantage of all Milwaukee has to offer during the weekend and extend your stay with your family. Summerfest, Harley Museum, Art Museum, Discovery World, Milwaukee County Zoo are just a few attractions.

**Lynden Sculpture Garden:** Experience art in nature through its collection of more than 50 monumental sculptures sited across 40 acres of park, lake and woodland., along with the Bonsai Exhibit which is collaboration with the MBS and the Milwaukee Bonsai Foundation.



### For Sale

Bougie in Sara Rayner pot, small ginkgo, rhus trilobata (skunkbush sumac-beautiful fall colors), Montpelior maple, Ponderosa pine.

For pix and prices, email [hagr8d@mac.com](mailto:hagr8d@mac.com)

## **Ancient Arts Bonsai**

Bonsai Supplier Established  
in 2005

Bonsai a Growing Hobby  
Wisconsin's Leading Full Line Bonsai Supplier

Tools, Wire – Aluminum & Copper, Pots, Fertilizers  
Soils – Akadama, Lava, Pumice, Kanuma, Blends  
Trees – Tropical, Deciduous, Conifers, Evergreens  
Services – Lessons, Consults, Repotting, Wiring, Boarding

See our updated Website: [aabonsai.com](http://aabonsai.com)  
Email – [aabonsai@charter.net](mailto:aabonsai@charter.net)  
Phone – 262-490-8733



## ABS Rendezvous on the River

ABS took place in Olive Branch, MS this year over the Memorial Day weekend (May 26-29) and I attended the convention. Although there were many different workshops and classes each attendee was limited to enrolling in 4 (2 on Friday and 2 on Saturday), so you get to see my perceptive of how the weekend went.



The convention hotel



Thursday night's demo



The first workshop on Friday was a Critique of artistic exhibition with Robert Steven.



Friday dinner was a picnic at Brussel's Bonsai nursery



The second workshop on Friday was a hands on experience with a Shim-paku Juniper with Suthin Sukosolvisit (yes, I now own an outdoor tree)







The first workshop on Saturday was a lecture on bonsai pottery with Michael Ryan Bell



The second, and last workshop on Saturday, was a Bonsai Container Workshop with Byron Myrick. I took the mess on top and put it together to make the pot on the bottom! In 6 weeks when Byron sends me the finished, fired pot I will have a masterpiece



Saturday night Banquet

Our very own Kevin S. came in 2nd in the New Talent Contest.

Congratulations Kevin!



Next Year's ABS convention will be June 8-11, 2023 in Denver

# Talent and Leadership

by PAM W

---

Let's talk about our club and its great history of talent and leadership. In February 2002, Jack Douthitt proposed "*To discover and promote new American talent in the art of bonsai.*" The first New Talent Competition was held on Saturday June 29, 2002 at the 2002 ABS Symposium in Milwaukee, Wisconsin.

This past month one of our own new American talents, Kevin S. participated at the 2022 American Bonsai Society National Convention down in Olive Branch Mississippi. He was given raw stock (Shimpaku Junipers) and tasked with giving the material its first Bonsai styling. In Kevin's words "All of the material were upright "S" trunks... I knew I had to somehow eliminate that trunk line as cliché "mallsai", but as I was sporting a freshly broken Clavicle bone, I knew I could not wrestle any really heavy copper... So, laying it down and out as a semi-cascade was the logical move."

He came in second place by 1 vote and won the Popular Vote by a Mississippi Mile.



Participants are a group of people who have a passion for bonsai, learning and a sense of adventure and doing bonsai for fewer than 10 years (exception for COVID).

Attending events like conventions give bonsai enthusiasts the opportunity to participate in bonsai activities, educational workshops and demonstrations. And most of all to enjoy the company of talent and leadership in our bonsai community.



See Kevin at MABA/Milwaukee 2022 Convention on June 23 – 26, 2022.



PO Box 240822  
Milwaukee, WI 53224  
[www.milwaukeebonsai.org](http://www.milwaukeebonsai.org)

Next MBS meeting will be  
July 2, 2022 @ 9am  
Boerner Botanical Gardens

## 2022 MBS OFFICERS

President [Erich B](#)  
1st VP [Pam W](#)  
2nd VP [Teri W](#)  
Secretary [Rick W](#)  
Treasurer [Clif O](#)  
Director [John N](#)  
Director [Greg R](#)  
Director [Irene H](#)

Past Pres.

### Other Club Functions

Newsletter [Melissa J](#)  
Webmaster [Pam W](#)

PAB Board—Ron F, Houston S & Judy S



Nurtured and content  
Trees thriving in a small pot  
That's what bonsai are  
~Greg Raleigh