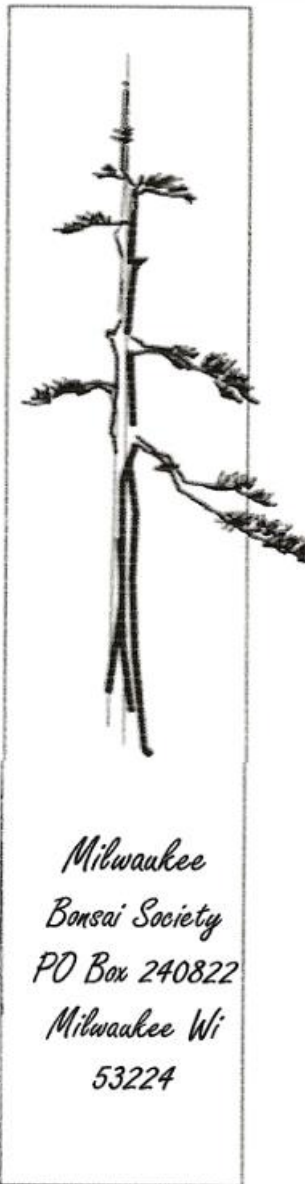


BONSAI NEWS

February 2024



Upcoming Meeting

Main Topic - Bonsai Containers for Developmental Growth

This month Ron will speak about the many options one has when working with bonsai that are not quite ready for a "finished ceramic pot".

Maybe the tree was recently harvested from the wild or an urban collecting site. Maybe it is a tree that was found at a nursery. Maybe it is a tree that has been suffering in a "finished pot" and it needs some TLC to mend and recover.

We will go over several of the options available and what each option's PROs and CONs are.

Focus Topics: TOPIC #1 - Chopsticking - Bulletnose vs Others

TOPIC #2 - Fertilizing in early spring YES or NO ????

Next Meeting

Feb 3, 2024

9 am

Boerner

Botanical

February

February 3 – Introducing your tree to a bonsai container/ Chopsticking

February 10 – Fundamentals Class #1*

February 24 – Fundamentals Class #2*

February 25 – Silhouette Show

March

March 2 – Wound Care/
Unwrapping an air layer

March 9 – Fundamentals Class #3*

March 23 – Bonsai Skills 101*

March 23 – Fundamentals Class #4A*

March 24 – Bonsai Skills 201*

March 30 – Fundamentals Class #4B*

April

April 6 – Dawn Redwood Forest
Creation/Curved chisel use

April 13 – Bonsai Skills 101*

April 14 – Bonsai Skills 201*

April 27 – Fundamentals Class #5*

*Open to MBS members only

President's Message

As we slowly emerge from the winter's first real blizzards and the depths of the cold, it's almost hard to imagine that it's time to get ready for spring. Depending on species, we may be as little as a month from the madness that is repotting season. This is the time to survey your collection, identify which are due for repotting, and start to get ready.

Personally, I am terribly disorganized when it comes to things like pots, and I occasionally will come across one and think, "Wow, I forgot I had this one". In the next couple of weeks, I need to not only survey the trees, but go through my available pot selection to match them with the appropriate tree that's going to get a new home. That's why I'm personally excited about the February meeting presentation, when Ron F will be presenting on how to properly introduce your tree to the right pot for its stage of development and [as always] what are we hoping to accomplish.

Coming up on February 25th is one of my favorite annual events, the Silhouette Show at the Domes. If you want to display a tree, go to Eventbrite. The great thing about this display is it's just trees—no stands, no accent plants, etc. Many of the trees show, without the obstruction of leaves, the fine branching and ramification that the owners have developed with hard work and a lot of time, often several years.

If a person doesn't have tropical trees, winter can be pretty dull, with my own activity limited to trudging out to the greenhouse every few days to make sure nothing is getting too dry. Right around the corner is when bonsai gets to be busy, and fun, again. Each spring, I feel like I'm reuniting with a bunch of friends as I bring the trees out, assess how they did through the winter, and then watching them wake up. I will admit, if questioned, that I've helped sustain my spirits over winter by a little bit of eBay therapy. Several new pots are arriving to provide possible new homes, if not for a tree I have, then for one I'll find someday.

Rick

| | |
|---|---|
| <p>Ancient Arts Bonsai Bonsai Supplier Established in 2005</p> | <p>Tools, Wire – Aluminum & Copper, Pots, Fertilizers Soils – Akadama, Lava, Pumice, Kanuma, Blends Trees – Tropical, Deciduous, Conifers, Evergreens Services – Lessons, Consults, Repotting, Wiring, Boarding</p> |
| <p>Bonsai a Growing Hobby Wisconsin's Leading Full Line Bonsai Supplier</p> | <p>See our updated Website: aabonsai.com Email – aabonsai@charter.net Phone – 262-490-8733</p> |

New Videos are now available!

In the month of January, **FIVE new videos** have been posted to the MBS Membership Video Site. You will find recordings of the monthly meetings, along with a special presentation.

Here's what's new:

Monthly Meetings

November 2023 Meeting Main Topic #1 – Energy Positive and Energy Negative Revisited – by Steve C and Brian S

November 2023 Meeting Main Topic #2 – Winter Storage of your Trees – by Steve C and Brian S

January 2024 Meeting Main Topic #1 – Why and When to Repot your Trees – by Steve C and Brian S

January 2024 Meeting Main Topic #2 – Bonsai Soil and Soil Biology – by Steve C and Brian S

Special Presentations

Wiring as an aid for Winter Storage plus Propagation Tips – by Houston S

Remember, the site is password protected and we ask that you do not share the login information with anyone outside of our organization. If you have lost or did not receive your login information, send us an email.

Additional videos will be added next month.



WISCO BONSAI NOW HAS THE AREA'S LARGEST SELECTION OF ARTISIAN, HANDMADE BONSAI POTTERY, MUCH OF WHICH CONSISTS OF LOCAL AND REGIONAL ARTISTS.

WE ALSO NOW CARRY A LINE OF TOOLS GEARED TOWARD THE BEGINNER AND NOVICE AMONG US, ALONG WITH ALL MANNER OF BONSAI SUNDRIES, SUCH AS, COPPER & ALUMINUM WIRE, JIN SEAL, WOUND PUTTY, ETC.

AND OF COURSE THERES THE SUBSTRATE, WISCO GOLD... THE BEST NON-JAPANESE MIX AROUND WE ALSO OCCASIONALLY HAVE OTHER RAW SUBSTRATE COMPONENTS AVAILABLE (PUMICE, LAVA, ETC). SEVERAL SIZES OF KANUMA NOW AVAILABLE !!!

GOT ORCHIDS ? WE HAVE A SUBSTRATE FOR THOSE TOO !!!

WiscoBonsai@gmail.com 414-248-3827 www.WiscoBonsai.com
INSTAGRAM @wisco.bonsai

THE SHOP NOW HAS REGULAR HOURS IN THE SPRING, SUMMER AND FALL. HOURS ARE UPDATED WEEKLY ON MY GOOGLE INFO SITE. OR, TO BE THE AMONG FIRST TO KNOW ABOUT ALL THE WORKSHOPS AND OTHER FUN GOING DOWN AT WISCO BONSAI, JUST SHOOT AN EMAIL AND I WILL ADD YOU TO THE EMAIL LIST.

"BONSAI IS THE ART OF NATURE, GUIDED AND NURTURED BY HUMAN HANDS" - KMIS

WISCO BONSAI
www.WiscoBonsai.com

Member's Corner


There is no better way to show someone that they are on your mind than to recommend a book to them. That's what Bonnie P. has done. She started by wishing us a Happy New Year and then said "I started listening to Finding the Mother Tree by Suzanne Simard. If, you have not read this book, get out and buy it today. I am blown away with the story and information about trees, roots, fungi, and how this is all connected in the forest." Well, I bit and started listening to it myself.

The author, Simard writes--in inspiring, illuminating, and accessible ways—how trees, living side by side for hundreds of years, have evolved, how they learn and adapt their behaviors, recognize neighbors, compete and cooperate with one another with sophistication, characteristics ascribed to human intelligence, traits that are the essence of civil societies--and at the center of it all, the Mother Trees: the mysterious, powerful forces that connect and sustain the others that surround them.

The book is a New York Time Best Seller, One of the Wall Street Journal's Ten Best Books of the Year, One of the Best Books of the Year: TIME, and The Washington Post.

Thank Bonnie for bringing this book to our attention! Book Club anyone?

Pam W



Do you have something you would like to share with your bonsai friends? Consider submitting your story for the Member's Corner. You don't need to be a great writer, just willing to share your ideas or experiences. Send your ideas to Melissa J at:

missyuc2@yahoo.com



Schedule Notes

By Pam W

Fertilizing is a great way of giving our trees that little extra push to grow more.

Schedule Maintenance Fertilizing

Fertilizing should start at the beginning of the Spring season. We want to feed the tree well to make them nice and strong before we de-candle or defoliate a tree. After de-candling or defoliation, all fertilizers are removed and even the top soil is scrapped off and replaced. Fertilizing should stop for about 4-5 weeks, then resumed moderately once the new growth appears. If we started to feed the tree heavy after the 4-5-week break, we run the risk of the new growth growing just as big, defeating the purpose of de-candling or defoliation. If we continue feeding heavily right after, the roots could potentially burn because the tree can't take that much food anymore and the soil becomes too toxic with nutrients. This is the same as if we were to dump a bunch of food on the soil after freshly repotting a tree.

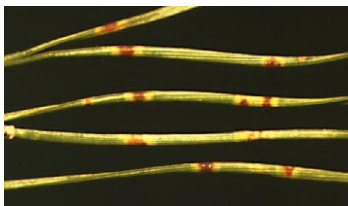
These are the updated Fertilizing schedules presented by Peter Tea.

Black Pine: April 1 to June 1 August 1 to November 1

High Mountain Pine: August 1 to November 1

Deciduous: May 31 to November 1

Other: April 1 to November 1



Small, pale spots on the needles are the first symptom of Needle Cast.

For proper fertilization, ensure the nitrogen is water soluble. A low N-P-K such as 5-3-1 is preferred such as Grow Power Plus which may not be the best in our humid climate.

Schedule Pest/Disease Control

Merit Granular (Merit .5 G by Bayer) contains imidacloprid. The active ingredient, Imidacloprid causes the insect to stop feeding and is a very effective, broad-spectrum insecticide for use against soil insect pests such as white grubs, crane fly, mole crickets and lawn moths like sod webworm. Products that contain imidacloprid include Menards Premium Grub Control, Bonide Annual Grub Beater, Bayers Tree & Shrub Insect Control

Clearys 3336 DG Lite is a systemic fungicide for the prevention and control of turf diseases and the diseases of annual and perennial flowers, bedding plants, foliage plants, ground covers, plus deciduous trees and shrubs. Foliar spray, dip and drench applications can be made for smaller projects consider Bonide INFUSE Lawn & Landscape Granules which has the same active ingredient (Thiophanate - Methyl 2.08%) as Clearys 3336 DG Lite but comes in a smaller 7.5 bag.

Here are Peter Tea's recommendations for Fungus and Bug control:

- CLEARY 3336 granulated (fungicide). Apply about 2 teaspoon per cubic foot of pot space every 3 months.
- MERIT .5G granulated (insecticide). Apply about 2 teaspoon per cubic foot of pot space 2x per year.

Be aware these products may impact your Soil Building Practices. I have had success using this schedule for control of Cedar Apple Rust and Pine Needle Cast which is a problem in our humid Milwaukee climate.

Be aware that some chemical products may impact your Soil Building Practices.



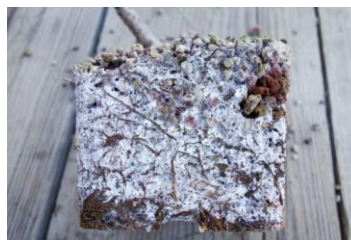
Mycorrhizae Notes

By Pam W

Mycorrhizae are essential in areas where soils are deficient in water and certain nutrients - conditions that are found in our bonsai. Even when there is an ample amount of a nutrient, it may not be readily accessible to the tree.



Example roots with and without mycorrhizae.



Lots of Ectomycorrhizal near the roots (photo by Jonus Dupuich).

Mycorrhizae

Mycorrhizae is a symbiotic association between a fungus and plant roots. The term mycorrhiza refers to the role of the fungus in the plant's rhizosphere, its root system. The plant makes organic molecules by photosynthesis and supplies them to the fungus in the form of sugars or lipids, while the fungus supplies the plant with water and mineral nutrients, such as phosphorus, taken from the soil.

Mycorrhizae play important roles in plant nutrition, soil biology, and soil chemistry. Recently, we have been learning how important they are to moisture and nutrient gathering for our trees. There are two basic kinds of mycorrhizae (mike-o-rise-ee): ectotrophic and endotrophic. Trophic relates to nourishment. Ecto relates to outside or external. Endo relates to inside or internal.

Ectotrophic Mycorrhizae serve the tree without actually penetrating into the cells of feeding roots. The fine fungi threads (hyphae) form a sheath around the lateral feeding roots. Ectotrophic forms the relationship to woody plants about 10% of plant families including birch, oak, pine, rose, orchids. Sheathing fungi often send up fruiting bodies. These include the many toadstools commonly seen around trees.

Endotrophic Mycorrhizae hyphae actually penetrate into the cortical cells of the feeding roots. The hyphae do not form sheath but extend into the soil like a web.

Appearance

Mycorrhiza may appear white or tan in color. Just a little might be visible or it can fill the pot. In our landscapes, toadstools, especially ones that follow root runs and appear below trees, can be a sign of ectomycorrhiza. Another sign are the fungal coating and odd branching structure of affected tree and shrub roots.

Mycorrhizal Inoculant

Many times, you can find and collect the fungi in soil of established trees. Pine trees are the obvious choice. It can be spotted by its white color in the soil. To inoculate your soil, dig core samples from the root area of the established tree and mix it in with your soil. You can also add a fertilizer that contains a variety of different mycorrhiza species. If you are using straight Mycorrhizal granular or powder inoculant, during the repot, you can sprinkle granular mycorrhizal directly on the roots.

When purchasing Mycorrhizae be sure it contains Ectotrophic and that the expiration date has not passed. Leading Mycorrhizal Inoculant Worth Considering and can be had from Amazon

- Great White premium mycorrhizae** which has 7 species of Ectomycorrhiza
- Mikro-Myco** has 7 species of Ectomycorrhizae
- Dr Earth Root Zone Starter Fertilizer** has 9 species of Ectomycorrhiza
- Down To Earth Tree & Shrub Fertilizer** has 7 species of Ectomycorrhizae

It is good Soil Building Practice to use the lowest feasible amounts of manure, fertilizer, fungicides, and repotting.



PO Box 240822
Milwaukee, WI 53224
www.milwaukeebonsai.org

Next MBS meeting will be
February 3, 2024 @ 9am

2023 MBS OFFICERS

President [Rick W](#)
1st VP [Pam W](#)
2nd VP [Rob S](#)
Secretary [Greg R](#)
Treasurer [John N](#)
Director [Joe T](#)
Director [Irene H](#)
Director [Mike B](#)
Past President [Erich B](#)

Other Club Functions

Newsletter [Melissa J](#)
Webmaster [Pam W](#)
Librarian [Greg R](#)

PAB Board-Ron F, Houston S & Judy S



*Glittering flakes
The wind is breaking
Frozen moonlight*

~Horiuchi Toshimi